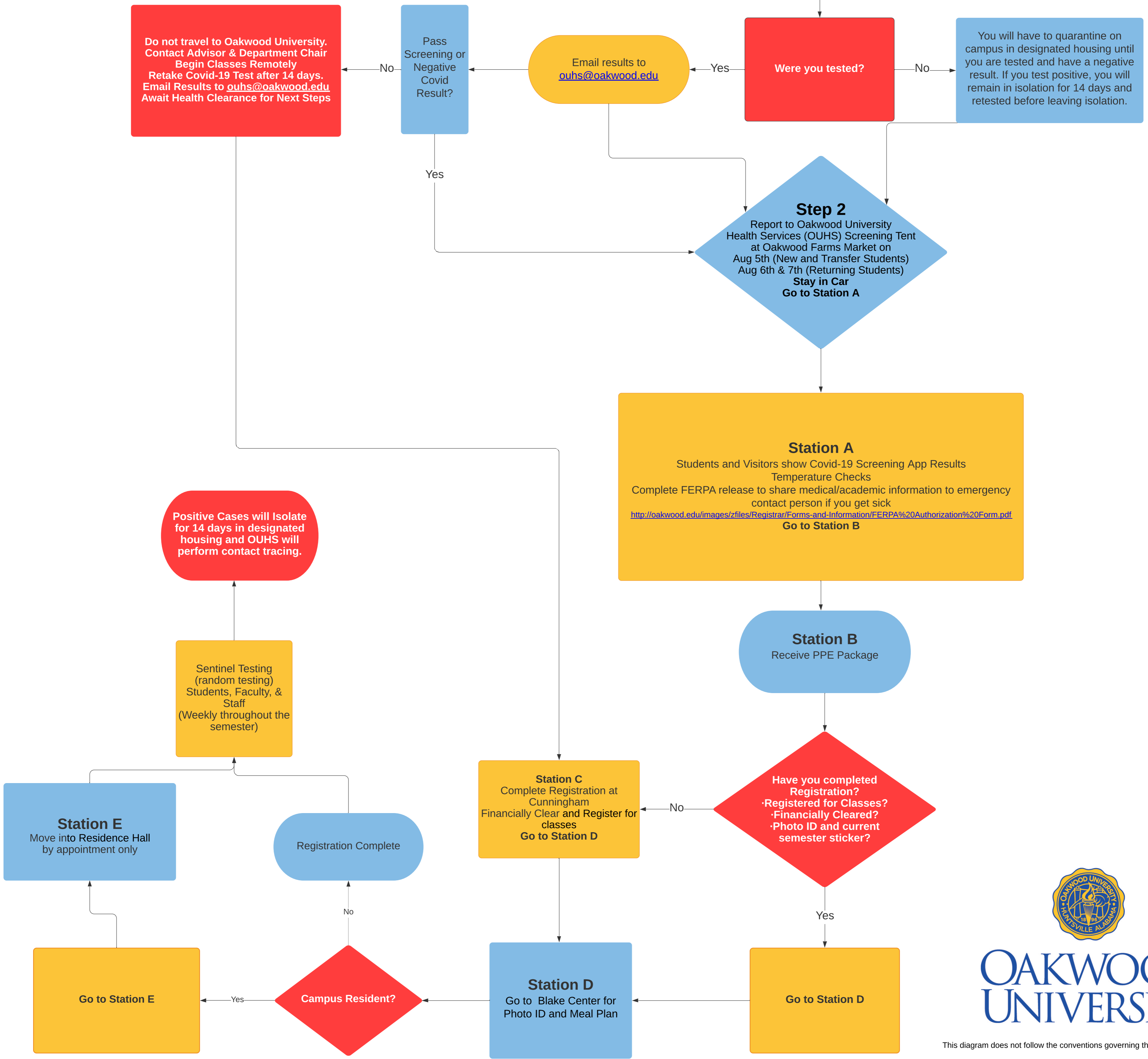


Oakwood University Covid-19 Student Re-entry Protocol

As prepared by the OU Public Health Committee

STEP 1

- Test for Covid-19 7-14 Days Before Arrival
- New and Transfer Students arrive Aug 5th
- Returning Students arrive Aug 6th & 7th
- Complete E-learning Module on D2L
- Complete COVID-19 Screening on the Apple Covid-19 Screening Tool App or the link <https://www.apple.com/covid19/>
- If you can't download the app save the link to your homescreen
- (Email Test Results to ouhs@oakwood.edu)**



OAKWOOD UNIVERSITY

This diagram does not follow the conventions governing the creation of flowcharts.