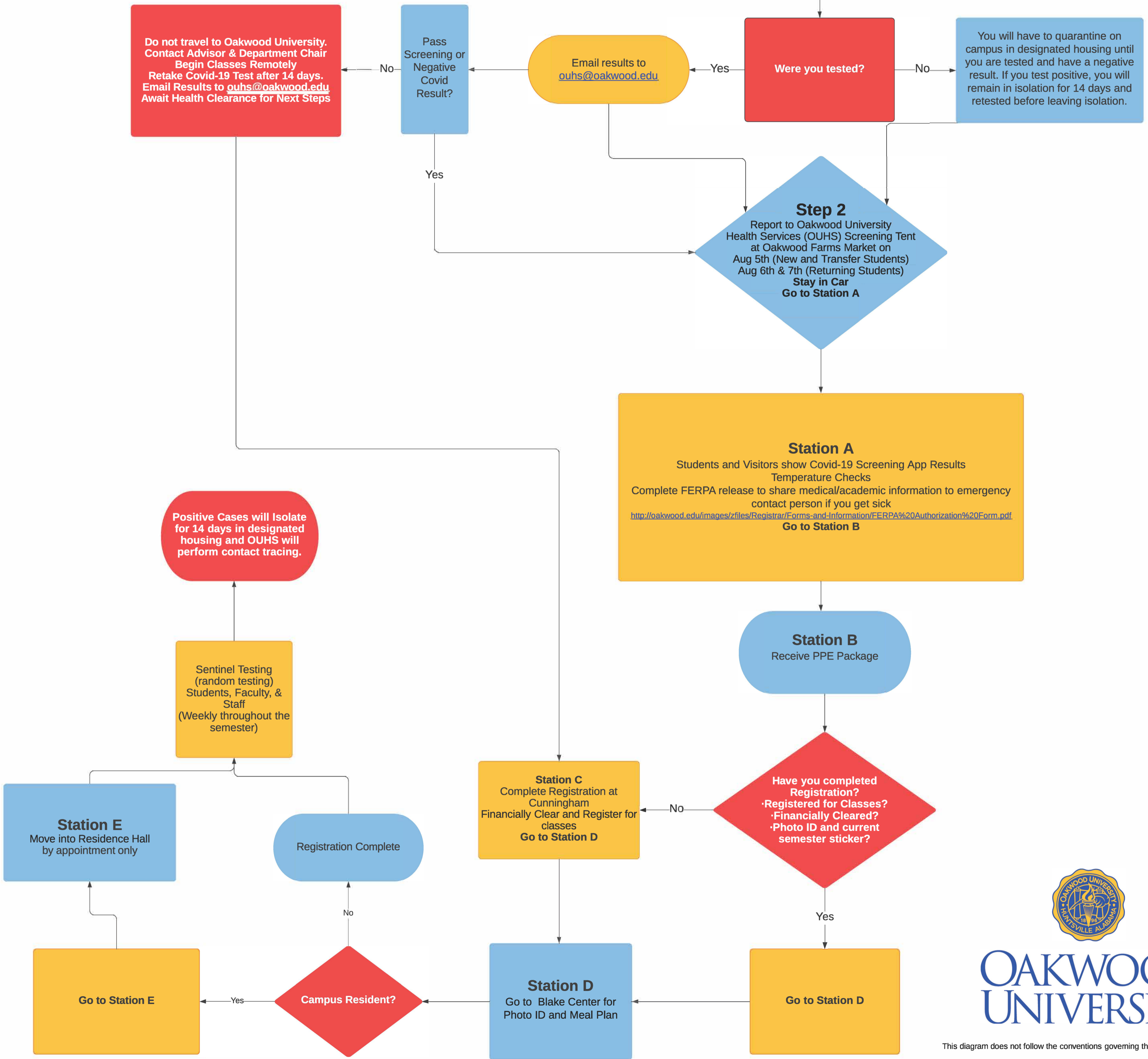


Oakwood University Covid-19 Positive Student Flow Chart

as prepared by OU Health Services

STEP 1
 ·Test for Covid-19 7-14 Days Before Arrival
 ·New and Transfer Students arrive Aug 5th
 Returning Students arrive Aug 6th & 7th
 ·Complete E-learning Module on D2L
 ·Complete COVID-19 Screening on the Apple Covid-19 Screening Tool App or the link <https://www.apple.com/covid19/>
 If you can't download the app save the link to your homescreen
 (Email Test Results to ouhs@oakwood.edu)



OAKWOOD UNIVERSITY

This diagram does not follow the conventions governing the creation of flowcharts.